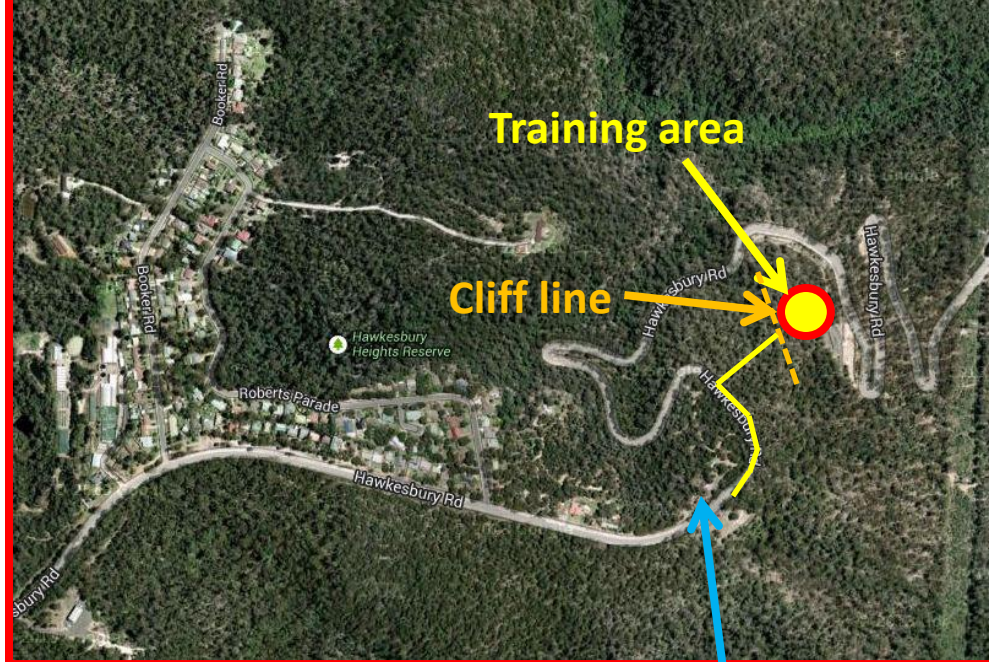




Sydney Speleological Society training area

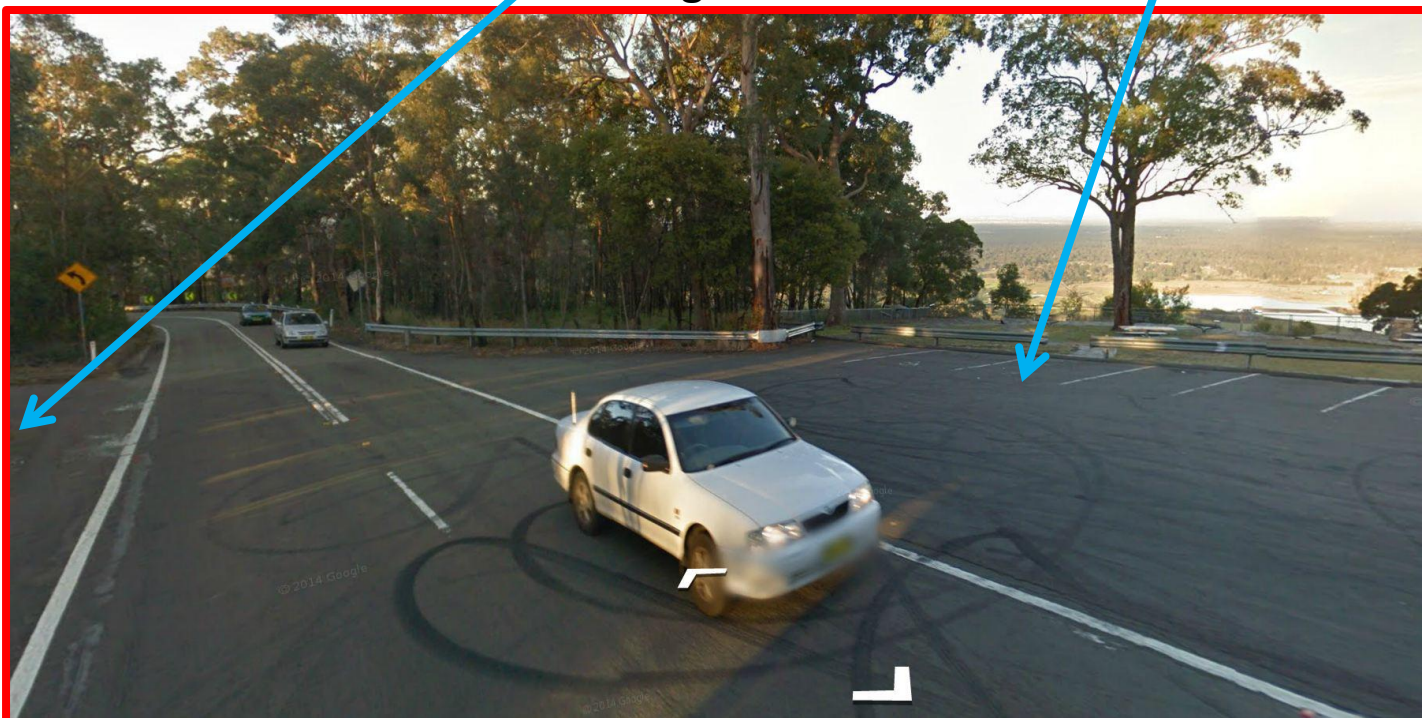
Hawkesbury lookout, Hawkesbury Road



Directions from the car park

- Heading North, walk along the right hand side of the armco railing next to the road. (100m)
- At the end of the armco railing turn right & look for a large rock cairn at the top of the cliff line. (20m)
- Walk down a faint track that zig zags down through the cliffs. (30m)

Parking on both sides of road



The climbing area is about 100 metres long with 3 main areas that are bolted for climbing.

The cliffs are around 10 metres high.

There are public toilets at the car park and good mobile phone reception.

There are shops 5 minutes away at Winmalee if anyone needs food supplies for lunch.